

SCANNER COMPARISON GUIDE

Solutions for General Purpose, Healthcare and Industrial Use



TABLE OF CONTENTS

- 3 Handheld Scanners, General Purpose
- 4 Handheld Scanners, Healthcare
- 5 Handheld Scanners, Industrial
- 7 Pocketable and Wearable Scanners
- 8 Hands-Free Scanners
- 9 Fixed and Bioptic Scanners

Note: In a continuing effort to improve our products, Honeywell reserves the right to change specifications and features without prior notice.

HANDHELD SCANNERS

GENERAL PURPOSE ECONOMY ID MODELS



Product Model ■ □ ECLIPSE™ 5145

■ □ VOYAGER™ 9520/VOYAGER CG 9540

■ □ VOYAGER 1200g/VOYAGER 1202g/VOYAGER 1202g-bf

■ □ VOYAGER 1250g

Scanning Technology

Linear Laser

Linear Laser

Linear Laser

Linear Laser

Decode Compatibility

1D, GSI Databar

1D, GSI Databar

1D, GSI Databar

1D, GSI Databar

Typical Read Range

0 mm–178 mm (0 in.–7.0 in)

0 mm–254 mm (0 in.–10 in)

0 mm–367 mm (0 in.–14.4 in)

0 mm–446 mm (0 in.–17.6 in)

Motion Tolerance/
Scanning Rate

72 scans/s

72 scans/s

100 scans/s

100 scans/s

Connectivity

Corded

Corded

1200g: Corded
1202g/1202g-bf: Bluetooth® Wireless (10 m [32.8 ft])

Corded

Host Interface

USB, Keyboard Wedge, RS-232, IBM 46xx (RS485)

USB, Keyboard Wedge, RS-232, IBM 46xx (RS485)

USB, RS-232, Keyboard Wedge, IBM 46xx (RS485)

USB, RS-232, Keyboard Wedge, IBM 46xx (RS485)

Software

MetroSet™ 2 Configuration Utility, Honeywell USB Serial Driver, MetroPOS Driver, MetroPOS Driver, MetroWEPoS Driver, Softwedge

MetroSet 2 Configuration Utility, Honeywell USB Serial Driver, MetroJPOS Driver, MetroPOS Driver, MetroWEPoS Driver, Softwedge

EZConfig, Honeywell Javapos Suite, Honeywell OPoS Suite, Honeywell POS4Net Suite, Honeywell OPoS Suite for Linux, Honeywell USB Serial Driver

EZConfig, Honeywell Javapos Suite, Honeywell OPoS Suite, Honeywell POS4Net Suite, Honeywell JPOS Suite for Linux, Honeywell USB Serial Driver

Durability (Drop)

Multiple 1.5 m (5 ft)

Multiple 1.5 m (5 ft)

30 drops 1.5 m (5 ft)

30 drops 1.5 m (5 ft)

Durability (IP)

Sealed to resist airborne particulate contaminants

Sealed to resist airborne particulate contaminants

IP42

IP40

Operating Temperature

0°C to 40°C (32°F to 104°F)

0°C to 40°C (32°F to 104°F)

1200g/1202g-bf: 0°C to 50°C (32°F to 122°F)
1202g: 5°C to 40°C (41°F to 104°F)

0°C to 40°C (32°F to 104°F)

Warranty

3 years

5 years

1200g: 5 years
1202g/1202g-bf: 3 years

5 years

Deployment Environments

Retail, Administrative

Retail

Retail, Manufacturing

Retail, Manufacturing

Features and Benefits

CodeGate™: Zero in on desired code and complete data transmission with the push of a single button –ideal for menu scanning applications

CodeSense: Automatically wakes scanner from sleep mode when a barcode is detected
Compact and light form factor

Automatic Trigger: Use scanner as either a handheld device or a fixed presentation scanner when mounted in the stand

Flash ROM: Future-proof POS system with free firmware updates via MetroSet 2 software and standard PC

CodeGate: Zero in on desired code and complete data transmission with the push of a single button –ideal for menu scanning applications (MS9540 only)

Increases throughput: Extended depth of field makes it easy to scan out-of-reach items; provides true object detection and automatic in-stand detection and configuration

Ease of use: Simply set up with quick and easy stand assembly; ergonomic design reduces user fatigue in scan-intensive applications

1200g/1202g: Outstanding scan performance on poor-quality and damaged barcodes maintains productivity by providing a worry-free linear scanning solution that minimizes the need for manual data entry
1200g/1202g: Contemporary, ergonomic design
1202g-bf: Battery-free wireless technology: Fully charges in less than 35 seconds with a wall power adapter, and provides short-term power for up to 100 wireless scans
1202g-bf: Enhanced ergonomics, reduced environmental impact: The well-regarded Voyager design is further ergonomically enhanced by eliminating the battery, making the scanner lighter and more environmentally friendly

Note: In a continuing effort to improve our products, Honeywell reserves the right to change specifications and features without prior notice.

HANDHELD SCANNERS Continued

GENERAL PURPOSE PREMIUM 1D MODELS

ECONOMY 1D/2D MODELS

PREMIUM 2D MODELS



Product Model	<input checked="" type="checkbox"/> HYPERION™ 1300g <input checked="" type="checkbox"/> VOYAGER 1400g/VOYAGER 1450g/VOYAGER 1452g <input checked="" type="checkbox"/> SG201/SG208	
Scanning Technology	Linear Imager	Area-Imaging (upgradable)
Decode Compatibility	1D, GSI Databar	1400g 1D: 1D 1400g PDF: 1D and PDF417 1400g 2D: 1D, PDF417 and 2D
Typical Read Range	10 mm – 660 mm (5 in – 26 in)	1400g: 25 mm – 355 mm (1.0 in – 14 in) 1450g/1452g: 32 mm – 360 mm (1.2 in – 14.2 in)
Motion Tolerance/ Scanning Rate	270 scans/s	10 cm/s (4 in/s)
Connectivity	Corded	1400g: Corded 1450g/1452g: Bluetooth Wireless (10 m [32.8 ft])
Host Interface	USB, Keyboard Wedge, RS-232, IBM 46xx (RS485)	USB, Keyboard Wedge, RS-232, IBM 46xx (RS485)
Software	EZConfig, Honeywell JavaPOS Suite, Honeywell OPoS Suite, Honeywell POS4Net Suite, Honeywell JPOS Suite for Linux, Honeywell USB Serial Driver	EZConfig, EZDL TotalFreedom™ Plug-In, EasyParse GSI, Honeywell JavaPOS Suite, Honeywell OPoS Suite, Honeywell POS4Net Suite, Honeywell USB Driver
Durability (Drop)	50 drops 1.5 m (5 ft)	30 drops 1.5 m (5 ft)
Durability (IP)	IP41	1400g/1452g: IP42 1450g: IP40
Operating Temperature	0°C to 50°C (32°F to 122°F)	1400g/1450g: 0°C to 40°C (32°F to 104°F) 1452g Charging: 5°C to 40°C (41°F to 104°F) 1452g Non-Charging: 0°C to 50°C (32°F to 122°F)
Warranty	5 years	1400g/1450g: 5 years 1452g: 3 years
Deployment Environments	Retail, Manufacturing, Transportation and Logistics	Retail
Features and Benefits	<p>Superior handheld scanning: Increase throughput by offering intuitive and aggressive handheld scanning performance</p> <p>Highly versatile: Eliminates the need to purchase specialty scanners by providing the ability to read out to 457 mm (18 in) on 13 mil barcodes, as well as high-density barcode reading in a single device</p> <p>Class-leading durability: Increase uptime and reduce service costs with a reliable design that utilizes no moving parts and full impact-resistant bumpers</p>	<p>1D models: omnidirectional and mobile phone screen reading of 1D barcodes</p> <p>Flexible licensing solution: Enables additional functionality (2D), as needs evolve</p> <p>Broadest shape range within its segment: tethered and cordless, curved and gun-shaped</p> <p>Wireless connectivity: Bluetooth Class 2, v2.1 radio enables movement up to 10 m (33 ft) from base, reduces interference with other wireless systems (1452g only)</p> <p>Batch mode: up to 550 1D barcodes storage capacity, while out of Bluetooth range (1452g only)</p>
		<p>SG20x1D/SG20x2D: Linear Imager</p> <p>SG20xHP: Area Imager</p> <p>1D, PDF417, 2D</p> <p>20 mm – 950 mm (0.8 in – 37.4 in)</p> <p>SG20x1D: Up to 200 scans/s SG20x2D: 1016 cm/s (400 in/s) SG20xHP: 1270 cm/s (500 in/s)</p> <p>SG20T: Corded SG20B: Bluetooth Wireless (10 m [32.8 ft])</p> <p>USB, Keyboard Wedge, RS-232</p> <p>EasySet, SmartWedgeLite</p> <p>Multiple 1 m (3.4 ft)</p> <p>IP30</p> <p>0°C to 50°C (32°F to 122°F)</p> <p>SG20T: 5 years SG20B: 3 years</p> <p>Retail</p> <p>Features one of the industry's fastest 2D imaging technologies for highly responsive, dependable scanning</p> <p>Unique, ergonomic styling maximizes comfort and saves countertop space</p> <p>Large LED indicator provides effective visual operational feedback</p>

Note: In a continuing effort to improve our products, Honeywell reserves the right to change specifications and features without prior notice.

HANDHELD SCANNERS Continued

GENERAL PURPOSE PREMIUM 2D MODELS



Product Model XENON 1900g/XENON 1902g

HEALTHCARE PREMIUM 2D MODELS



ENHANCED XENON 1900h/ENHANCED XENON 1902h



SF61BHC

Scanning Technology	Area-Imaging	Area-Imaging	Area-Imaging
Decode Compatibility	1D, PDF417, 2D	1D, PDF, 2D	1D, PDF, 2D
Typical Read Range	HD: 0 mm–234 mm (0.0 in–9.2 in) SR: 10 mm–584 mm (0.4 in–23.0 in) ER: 18 mm–597 mm (0.7 in–23.5 in)	0 mm–213.4 mm (0 in–8.4 in)	40 mm–360 mm (1.6 in–14.2 in)
Motion Tolerance/ Scanning Rate	610 cm/s (240 in/s)	610 cm/s (240 in/s)	305 cm/s (120 in/s)
Connectivity	1900g: Corded 1902g: Bluetooth Wireless (10 m [32.8 ft])	1900h: Corded 1902h: Bluetooth Wireless (10 m [32.8 ft])	Bluetooth Wireless (100 m [328 ft])
Host Interface	USB, Keyboard Wedge, RS-232, IBM 46xx (RS485)	1900h: USB, Keyboard Wedge, RS-232, IBM 46xx (RS485) 1902h: Cordless	Bluetooth HID Bluetooth SPP
Software	EZConfig, EZDL, TotalFreedom Plug-In, EasyParse GS1, EZBCBP, EasyParse UI/D, TotalFreedom SDK, Honeywell JavaPOS Suite, Honeywell OPOS Suite, Honeywell POS4Net Suite, Honeywell JPOS Suite for Linux, Honeywell USB Serial Driver	EZConfig, TotalFreedom Development Platform/TWAIN/SANE Driver	EasySet SmartWedgeLite
Durability (Drop)	50 drops 1.8 m (6 ft)	50 drops 1.8 m (6 ft)	26 drops 2 m (6.5 ft)
Durability (IP)	IP41	IP41	IP64
Operating Temperature	0°C to 50°C (32°F to 122°F)	0°C to 50°C (32°F to 122°F)	-20°C to 50°C (-4°F to 122°F)
Warranty	1900g: 5 years 1902g: 3 years	1900h: 5 years 1902h: 3 years	3 years
Deployment Environments	Retail, Manufacturing, Transportation and Logistics	Healthcare	Healthcare
Features and Benefits	Adaptus™ Imaging 6.0 along with Omniplanar's SwiftDecoder technology delivers the best user experience when reading real-world 1D, PDF and 2D barcodes Built with durability in mind: Solid-state construction will deliver years of uninterrupted performance Wireless connectivity: Bluetooth Class 2, v2.1 radio enables movement up to 10 m (33 ft) from base, reduces interference with other wireless systems and lowers total cost of ownership by allowing up to seven imagers to communicate to a single base (1902g only)	Unmatched barcode scanning performance with Adaptus imaging and Colofusion technology Can withstand up to 50 drops to concrete from distances as high as 1.8 m (6 ft) Disinfectant-ready housing withstands harsh cleaning agents commonly used in healthcare	Pocketable form factor: Compact enough to move with the clinician, the SF61B can be quickly stowed in a smock pocket when both hands are needed Disinfectant-ready housing with IP64 seal rating: Protects against the harmful effects of repeated chemical wipe-downs White Illumination: Powerful white illumination field can even double as a makeshift flashlight

Note: In a continuing effort to improve our products, Honeywell reserves the right to change specifications and features without prior notice.

HANDHELD SCANNERS Continued

INDUSTRIAL ECONOMY ID MODELS



Product Model ■ 3800i/3820i

■ GRANIT™ 1280i

Scanning Technology Linear Imaging

Full-Range Laser

Aimer Technology Laser

Laser

Laser



Decode Compatibility 1D, GS1 DataBar

1D

Typical Read Range 165 mm – 2083 mm (6.5 in – 82 in)

89 mm – 1650 mm (3.5 in – 649.6 in)

Motion Tolerance/
Scanning Rate 5 cm/s (2 in/s)

N/A

Connectivity **3800i:** Corded
3820i: Bluetooth Wireless (10 m [32.8 ft])

Corded

Host Interface USB, Keyboard Wedge, RS-232, IBM 46xx (RS485)

RS-232

Software EZConfig, Honeywell JavaPOS Suite, Honeywell OPOS Suite, Honeywell POS4Net Suite, Honeywell USB Serial Driver

EZConfig, Honeywell JavaPOS Suite, Honeywell OPOS Suite, Honeywell POS4Net Suite

Durability (Drop) 50 drops 2 m (6.5 ft)

50 drops 2 m (6.5 ft)

Durability (IP) IP54

IP65

Operating Temperature **3800i:** -30°C to 50°C (-22°F to 122°F)
3820i: -10°C to 50°C (14°F to 122°F)

-30°C to 50°C (-22°F to 122°F)

Warranty 3 years

3 years

Deployment Environments Manufacturing, Transportation and Logistics, Warehouse and Distribution

Manufacturing, Transportation and Logistics, Warehouse and Distribution, Outdoor Logistics

Features and Benefits **Superior read range:** Imaging technology now extends the performance range out to 208 cm (82 in) on linear codes, eliminating the need to reach and climb to scan codes

Durable: There are no moving parts to wear out and Honeywell backs this with an industry-leading three-year warranty, ensuring reliable performance year after year with no downtime

Easy to use: True point-and-shoot handheld ergonomics easily fits oversized gloved hands, while intuitive aiming means operators will become productive quickly

Full-range linear depth of field: Scan out to 16.5 m (54 ft) on 100 mil retro-reflective labels, or as close as 8.9 cm (3.5 in) on 7.5 mil high-density barcodes and everything in between

Class-leading durability: The custom-built IP65-rated housing is able to withstand 5,000 1 m (3.3 ft) tumbles and survive 50 drops from 2 m (6.5 ft) at -30°C (-22°F), reducing service costs and increasing device uptime

Industrial-grade cable option: Tested to withstand 300,000 90° bends at -30°C (-22°F) and continues to communicate when 21.2 kg (60 lb) of force is applied

Note: In a continuing effort to improve our products, Honeywell reserves the right to change specifications and features without prior notice.

HANDHELD SCANNERS Continued

INDUSTRIAL PREMIUM 2D MODELS



Product Model ■ GRANIT 1910i/GRANIT1911i

■ GRANIT 1980i/GRANIT1981i

■ SR61T DPM/SR61B DPM

Scanning Technology	Area-Imaging	Full-Range Area-Imaging	Area-Imaging
Aimer Technology	Laser	Laser	Laser
Laser			
Decode Compatibility	1D, PDF417, 2D	1D, PDF417, 2D	1D, PDF417, 2D
Typical Read Range	48 mm – 749 mm (1.9 in – 29.5 in)	100 mm – 1600 mm (3.9 in – 62.99 in)	55 mm – 360 mm (2.1 in – 14.1 in)
Motion Tolerance/ Scanning Rate	1910i: 610 cm/s (240 in/s) at 16.5 cm (6.5 in) 1911i: 381 cm/s (150 in/s) at 25 cm (10.0 in)	76 cm/s (30 in/s)	1270 cm/s (500 in/s)
Connectivity	1910i: Cabled 1911i: Bluetooth Wireless (100 m [328 ft])	1980i: Cabled 1981i: Bluetooth Wireless (100 m [328 ft])	SR61T DPM: Cabled SR61B DPM: Bluetooth Wireless (100 m [328 ft]) SR61T DPM: USB, Keyboard Wedge, RS-232 SR61B DPM: SPP, HID Keyboard
Host Interface	USB, Keyboard Wedge, RS-232, IBM 46xx (RS485)	USB, Keyboard Wedge (1981i only), RS-232	
Software	EZConfig, TotalFreedom SDK, Honeywell JavaPOS Suite, Honeywell OPOS Suite, Honeywell POS4Net Suite, Honeywell USB Serial Driver	EZConfig, TotalFreedom SDK, Honeywell JavaPOS Suite, Honeywell OPOS Suite, Honeywell POS4Net Suite, Honeywell USB Serial Driver	EasySet, SmartWedgeLite
Durability (Drop)	50 drops 2 m (6.5 ft)	50 drops 2 m (6.5 ft)	26 drops 1.98 m (6.5 ft)
Durability (IP)	IP65	IP65	IP54
Operating Temperature	1910i: -30°C to 50°C (-22°F to 122°F) 1911i: -20°C to 50°C (-4°F to 122°F)	1980i: -30°C to 50°C (-22°F to 122°F) 1981i: -20°C to 50°C (-4°F to 122°F)	-20°C to 50°C (-4°F to 122°F)
Warranty	3 years	3 years	3 years
Deployment Environments	Manufacturing, Transportation and Logistics, Warehouse and Distribution	Manufacturing, Transportation and Logistics, Warehouse and Distribution, Outdoor Logistics	Manufacturing
Features and Benefits	Class-leading durability: The custom-built IP65-rated housing is able to withstand 5,000 1 m (3.3 ft) tumbles and survive 50 drops from 2 m (6.5 ft) at -30°C (-22°F), reducing service costs and increasing device uptime Optimized for scanning-intensive industrial applications: AdapTus 6.0 Imaging Technology provides aggressive barcode reading and unrivaled accuracy while the scanner feedback is enhanced for use in extreme environments Outstanding scan performance on poor-quality and damaged barcodes: Maintains productivity by providing a worry-free scanning solution that minimizes manual entry	Full-range area-imaging performance: Scans low-density (100 ml) codes out to 16 m (52 ft) and high-density (2 ml) codes at close range – and everything in between Built Grant-tough: Tested to withstand the toughest environments, Grant is rated IP65 and can withstand 5,000 tumbles from 1 m (3.3 ft) and 50 drops to concrete from 2 m (6.5 ft) Easy to use: A laser-spot aimer, omnidirectional scanning and features such as centering take the guesswork out of scanning at extended ranges	Fast: Cutting-edge imager scans 1D and 2D barcodes with unmatched motion tolerance and fast time-to-read, while also supporting image and real-time video capture Optimized: Customized imaging engine scans dot-peened, chemical- or laser-etched direct part marks on a variety of substrates – and can even read small, reflective and low-contrast marks Rugged: Designed to withstand drops from 2 m (6.5 ft), hot and cold temperature extremes, constant forklift vibration and windblown dust and rain

Note: In a continuing effort to improve our products, Honeywell reserves the right to change specifications and features without prior notice.

POCKETABLE AND WEARABLE SCANNERS

GENERAL PURPOSE ECONOMY 1D/2D MODELS



Product Model ■ VOYAGER 1602G

Scanning Technology Area-Imaging

Decode Compatibility **1602g1D**: 1D
1602g2D: 1D, PDF417, 2D

Typical Read Range 31 mm–483 mm (1.2 in–19 in)

Motion Tolerance/
Scanning Rate 10 cm/s (4 in/s)

Connectivity Bluetooth Wireless (10 m [32.8 ft])

Host Interface Bluetooth HID, Bluetooth SPP

Software
EZConfig, M/FI SDK, TotalFreedom SDK
with AP06-100BT-07N: Honeywell Javapos Suite, Honeywell OPOS Suite, Honeywell POS4Net Suite, Honeywell JPOS Suite for Linux, Honeywell USB Serial Driver
Optional: EZDL, TotalFreedom Plug-In, EasyParse GSI

Durability (Drop) 30 drops 1.4 m (4 ft)

Durability (IP) IP42

Operating Temperature 0°C to 50°C (32°F to 122°F)

Warranty 3 years

Deployment Environments Retail, Light Field Service

Features and Benefits

Aggressive reading of data matrix barcodes
Seamless pairing with mobile devices (MFI-certified for Apple® iOS)
Flexible licensing solution: Enables additional functionality, such as 2D scanning, as needs evolve
Batch mode: Automatic, inventory, persistent mode
Ergonomically designed: Contoured and elegant design, over-sized scan button and light weight make scanning pleasurable

INDUSTRIAL PREMIUM 1D/2D MODELS



Product Model ■ SF61B

Scanning Technology **SF61B1D/SF61B2D**: Linear Imager
SF61BHP: Area Imager

Decode Compatibility 1D, PDF417, 2D

Typical Read Range 40 mm–710 mm (1.6 in–27.9 in)

Motion Tolerance/
Scanning Rate **SF61B1D**: up to 200 scans/s
SF61B2D: 1016 cm/s (400 in/s)
SF61BHP: 1270 cm/s (500 in/s)

Connectivity Bluetooth Wireless (100 m [328 ft])

Host Interface Bluetooth HID, Bluetooth SPP

Software EasySet, SmartWedgelite

Durability (Drop) 26 drops 2 m (6.5 ft)

Durability (IP) IP65

Operating Temperature -20°C to 50°C (-4°F to 122°F)

Warranty 3 years

Deployment Environments Manufacturing, Transportation and Logistics, Field Service, Warehouse

Bluetooth wireless easily pairs with Apple iOS, Android™ and Windows® mobile devices
Tested to withstand 26 drops to concrete from 2 m (6.5 ft) and rated IP65 for protection from liquid and dust
Capable of over 25,000 scans on a single battery charge

INDUSTRIAL WEARABLE, PREMIUM 1D/2D MODELS



Product Model ■ 8600

Scanning Technology **8650**: Laser
8670: Area Imager

Decode Compatibility **8650**: 1D
8670: 1D, PDF417, 2D

Typical Read Range **8650**: 25 mm–1143 mm (1 in–45 in)
8670: 36 mm–409 mm (1.4 in–16.1 in)

Motion Tolerance/
Scanning Rate **8650**: 104 scans/s
8670: up to 584 cm/s

Connectivity Bluetooth Wireless (10 m [32.8 ft])

Host Interface Bluetooth HID, Bluetooth SPP

Software Scan Wedge

Durability (Drop) **8650**: Multiple 122 m (4 ft)
8670: 30 drops 1.5 m (5 ft)

Durability (IP) IP54

Operating Temperature -20°C to 50°C (-4°F to 122°F)

Warranty **8650**: 1 year
8670: 3 years

Deployment Environments Transportation and Logistics, Warehouse and Distribution, Retail

Low-profile, hands-free: Reduces interference and improves worker transaction time while reducing accidental drops, lowering the total cost of ownership
Flexible design: Strap-and-connector design allows worker to wear the scanner on the back of the hand or on the arm, left or right, increasing worker satisfaction and comfort
Build-tough ring: Magnesium alloy top enclosures and a smooth, low-profile magnesium trigger offer greater durability and ease of use, leading to increased productivity, a lower cost of ownership and reduced downtime

Note: In a continuing effort to improve our products, Honeywell reserves the right to change specifications and features without prior notice.

HANDS-FREE SCANNERS

GENERAL PURPOSE ECONOMY 1D MODELS

PREMIUM 2D MODELS

PREMIUM 1D/2D MODELS

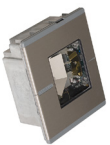


Product Model	■ QUANTUM™ 3580	■ □ ORBIT™ 7120/ORBIT CG 7180	□ SOLARIS™ 7820	□ VUQUEST™ 3320g	■ GENESIS™ 7580g	■ SOLARIS™ 7980g
Scanning Technology	Omnidirectional Laser	Omnidirectional Laser	Omnidirectional Laser	Area-Imaging	Area-Imaging	Area-Imaging
Decode Compatibility	1D, GSI Databar	1D, GSI Databar	1D, GSI Databar	1D, PDF417, 2D	1D, PDF417, 2D	1D, PDF417, 2D
Typical Read Range	19 mm – 298 mm (0.8 in – 11.8 in)	7120: 0 mm – 215 mm (0 in – 8.5 in) 7180: 0 mm – 275 mm (0 in – 10.8 in)	0 mm – 255 mm (0 in – 10.0 in)	39 mm – 435 mm (1.5 in – 17.1 in)	0 mm – 300 mm (0 in – 11.8 in)	0 mm – 190 mm (0 in – 7.5 in)
Motion Tolerance/ Scanning Rate	1650 scans/s	1120 scans/s	1800 scans/s	270 cm/s (106 in/s)	200 cm/s (78 in/s)	300 cm/s (118 in/s)
Connectivity	Corded	Corded	Corded	Corded	Corded	Corded
Host Interface	USB, Keyboard Wedge, RS-232, IBM 46xx (RS485)	USB, Keyboard Wedge, RS-232, IBM 46xx (RS485), Light Pen Wand Emulation	USB, Keyboard Wedge, RS-232, IBM 46xx (RS485)	USB, RS-232, Keyboard Wedge	USB, RS-232, Keyboard Wedge, IBM 46xx (RS485)	USB, RS-232, Keyboard Wedge, IBM 46xx (RS485)
Software	MetroSet 2, Metro POS Driver, MetroPOS Driver, MetroWEPoS Driver, Softwedge	MetroSet 2, MetroPOS Driver, MetroPOS Driver, Honeywell POS4NET Suite, Honeywell USB Serial Driver, Softwedge	MetroSet 2, MetroPOS Driver, MetroPOS Driver, Honeywell POS4NET Suite, Honeywell USB Serial Driver, Softwedge	EZConfig, TotalFreedom SDK, Honeywell POS Driver, Honeywell OPOS Driver, Honeywell POS4Net Suite, Honeywell USB Serial Driver, Softwedge, TWAIN Driver, SANE Driver	EZConfig, TotalFreedom SDK, MetroPOS Driver, MetroOPOS Driver, Honeywell POS4Net Suite, Honeywell USB Serial Driver, Softwedge, TWAIN Driver, SANE Driver	EZConfig, TotalFreedom SDK, MetroPOS Driver, MetroOPOS Driver, Honeywell POS4Net Suite, Honeywell USB Serial Driver, Softwedge, TWAIN Driver, SANE Driver
Durability (Drop)	Multiple 1.5 m (5 ft)	Multiple 12 m (4 ft)	N/A	Multiple 1.5 m (5 ft)	Multiple 1.5 m (5 ft)	Multiple 1.5 m (5 ft)
Durability (IP)	Sealed to resist airborne particulate contaminants	Sealed to resist airborne particulate contaminants	Sealed to resist airborne particulate contaminants	IP53	Sealed to resist airborne particulate contaminants	Sealed to resist airborne particulate contaminants
Operating Temperature	-20°C to 40°C (-4°F to 104°F)	0°C to 40°C (32°F to 104°F)	0°C to 40°C (32°F to 104°F)	0°C to 40°C (32°F to 104°F)	0°C to 40°C (32°F to 104°F)	0°C to 40°C (32°F to 104°F)
Warranty	3 years	3 years	2 years	2 years	2 years	3 years
Deployment Environments	Retail	Retail	Retail	Retail, Manufacturing	Retail	Retail
Features and Benefits	Omnidirectional/Single-Line Mode: Alternate between 2D scan lines for omnidirectional scanning and a single scan line for menu scanning Sleep Mode with IR Wake-Up: Multiple sleep modes reduce power consumption, extending life and lowering cost of operation Small footprint: Keeps valuable counter space clear	Aggressive omnidirectional scanning and an affordable solution Compact, lightweight solution for applications where counter space is at a premium Tiltable 30° range of scanning head to accommodate objects of various sizes and shapes	Aggressively scans high-density codes and fits easily into any existing enclosure found in small-item, high-volume retail environments Increases system output and lower the total cost of ownership Field-replaceable window: Minimizes downtime with quick and easy in-lane replacement of protective window	Highly compact, lightweight design with aggressive scanning performance on highly reflective surfaces or normal printing paper The ability to control the triggering of an external device Offers expanded decoding and data formatting functionality without host system modification	Aggressive reading of barcodes on highly reflective surfaces or normal printing paper Offers both presentation and trigger modes to accommodate different applications Offers expanded decoding and data formatting functionality without host system modification	Available with powerful 2D imaging capable of reading 2D coupons off smartphone screens and printed ID cards Soft white LED illumination eliminates glare without compromising performance Purchase the 7980 as a linear scanner and update it to a full area-imaging 2D scanner in the future, as your data capture needs evolve

Note: In a continuing effort to improve our products, Honeywell reserves the right to change specifications and features without prior notice.

FIXED AND BIOPTIC SCANNERS

GENERAL PURPOSE FIXED, VALUE ID MODELS



Product Model HORIZON™ 7600

BIOPTIC, ECONOMY ID MODELS



STRATOS™ 2400

BIOPTIC, PREMIUM ID MODELS



STRATOS 2700

Scanning Technology	Omnidirectional Laser	Bi-optics	Bi-optics
Decode Compatibility	1D, GSI DataBar	1D, GSI DataBar	1D, PDF, 2D
Typical Read Range	0 mm – 229 mm (0 in – 9.0 in)	Vertical: 0 mm – 200 mm (0 in – 7.8 in) Horizontal: 0 mm – 100 mm (0 in – 3.94 in)	Vertical: 0 mm – 228 mm (0 in – 9 in) Horizontal: 0 mm – 180 mm (0 in – 7 in)
Motion Tolerance/ Scanning Rate	2000 scans/s	5400 scans/s	21500 scans/s
Connectivity	Corded	Corded	Corded
Host Interface	USB, RS-232, IBM46xx (RS485)	USB, RS-232, IBM46xx (RS485)	Scanner: USB, RS-232, IBM46xx (RS485) Scale: USB and RS-232
Software	MetroSet 2 Configuration Utility, MetroJPOS Driver, MetroOPoS Driver, MetroWEPoS Driver, Softwedge	MetroSet 2 Configuration Utility, MetroJPOS Driver, MetroOPoS Driver, MetroWEPoS Driver, Softwedge, Mettler Diva Scale OPoS Driver	ECConfig, Honeywell JPOS Suite, Honeywell OPoS Suite, Honeywell POS4NET Suite, Honeywell JavaPOS Suite
Durability (Drop)	N/A	N/A	N/A
Durability (IP)	Sealed to resist airborne particulate contaminants	Sealed to resist airborne particulate contaminants	IP42
Operating Temperature	0°C to 40°C (32°F to 104°F)	0°C to 40°C (32°F to 104°F)	10°C to 40°C (50°F to 104°F)
Warranty	3 years	2 years	2 years
Deployment Environments	Retail	Retail	Retail
Features and Benefits	<p>Durable die-cast construction: Withstands abuse in the harshest environments</p> <p>Flash ROM: Protects POS investment with free firmware updates via MetroSet 2 software and standard PC</p> <p>Built-in RF EAS antenna: Increases efficiency by simultaneously deactivating RF EAS tags and decoding barcodes</p>	<p>5-sided, 360° scanning: Improves productivity and operator ergonomics by reducing product orientation</p> <p>StratosSYNC™ Independent Scanning Planes: Maintains productivity and uptime via independent scanning planes</p> <p>StratosSCHOOL Operator Training Software: Improves productivity and promotes safer scanning techniques</p>	<p>Hybrid scanning platform: Engineered to meet current and emerging retail trends; this hybrid solution seamlessly integrates both laser and imaging technologies for high-performance scanning</p> <p>LCD display: Live video feed enables cashiers to monitor items under the cart in an effort to reduce losses due to shrinkage, which have been estimated to be greater than \$2500 per lane per year</p> <p>Field-upgradable hardware modules: Expands device functionality via simple field upgrades that can be completed in less than 15 minutes</p>

Note: In a continuing effort to improve our products, Honeywell reserves the right to change specifications and features without prior notice.

For more information
www.honeywellaidc.com

Honeywell Safety and Productivity Solutions
9680 Old Baites Road
Fort Mill, SC 29707
800-537-6945
www.honeywell.com

Honeywell Scanner Comparison Guide | Rev. C | 08/17
© 2017 Honeywell International Inc.

Honeywell